

FPM-3191G

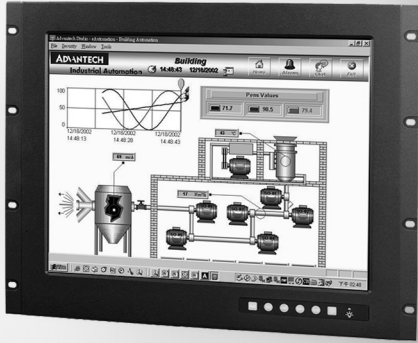
19" SXGA Industrial Monitor with Resistive Touchscreen, Direct-VGA and DVI Ports

http://www.promicro.co.za
mailto: info@promicro.co.za

52 Shepherd Ave., Bryanston, South Africa
P O Box 593, Cramerville, 2060, South Africa

Tel: 011-706-7913
Fax: 086-671-6808

ProMicro cc



Features

- 19" SXGA TFT LCD with resolution up to 1280 x 1024
- Robust design with stainless steel chassis and aluminum front panel
- Anti-reflective screen with tempered glass
- OSD control pad on front panel
- Supports industrial 24-48 V_{DC} power input (optional)
- Supports panel, wall, desktop, rack or VESA arm mounting
- Front panel is NEMA4/IP65 compliant

Introduction

FPM-3191G is a 19" color TFT LCD flat panel monitor specifically designed for industrial applications. With a viewing size as large as 19", it presents an ample display area as well as vivid and sharp images for your HMI. It features Direct-VGA signal transmission and the onscreen display function makes it easy to adjust the images on the screen. The stainless steel chassis and the NEMA4/IP65 compliant aluminum front panel enable installation in applications with water and dust.

Specifications

General

- **Button Controls** OSD (Onscreen Display) control pad on front panel
- **Certification** BSMI, CCC, CE, FCC Class B, UL
- **Dimension (W x H x D)** 482 x 399.2 x 66 mm (18.98" x 15.72" x 2.6")
- **Enclosure** Front panel: Aluminum with coating
Rear cover: Stainless steel chassis

*Mounting holes on rear cover are designed for PWR-246E DC Source
- **Mounting** Panel, wall, desktop, VESA arm & 19" rackmount
- **Power Input** DC Jack - Optional external 57 W power adapter, with
100 ~ 240 V_{AC} input and 12 V_{DC} @ 4.75 A output
- **Power Consumption** 35 W + 20%
- **Video Port** VGA & DVI-D Port
- **Weight (Net)** 10.65 kg (23.46 lbs)

LCD Display

- **Display Type** SXGA TFT LCD (AUO)
- **Display Size** 19"
- **Max. Resolution** 1280 x 1024
- **Max. Color** 16.2 M
- **Viewing Angle (H/V°)** 178/178
- **Luminance (cd/m²)** 300
- **Backlight Life (hrs)** 50,000
- **Contrast Ratio** 1300 : 1

Touchscreen (Optional)

- **Sensor** ELO
- **Driver** ELTOUCH
- **Type** 5-wire Resistive
- **Interface** RS-232 and USB
- **Lifespan** 35 million touches at a single point
- **Light Transmission** 80% ±5
- **OS Support** Windows XP, Vista, 7, XPe, CE, Linux
- **Power Consumption** +5 V @ 100 mA
- **Touch Resolution** Linearity

Environment

- **Operation Temperature** 0 ~ 50°C (32 ~ 122°F)
- **Storage Temperature** -20 ~ 60°C (-4 ~ 140°F)
- **Humidity (Storage)** 10 ~ 90% non-condensing
- **Waterproof** Front panel is NEMA4/IP65 compliant
- **Vibration** 5 ~ 500 Hz, 1 Grms (Operating, Random)

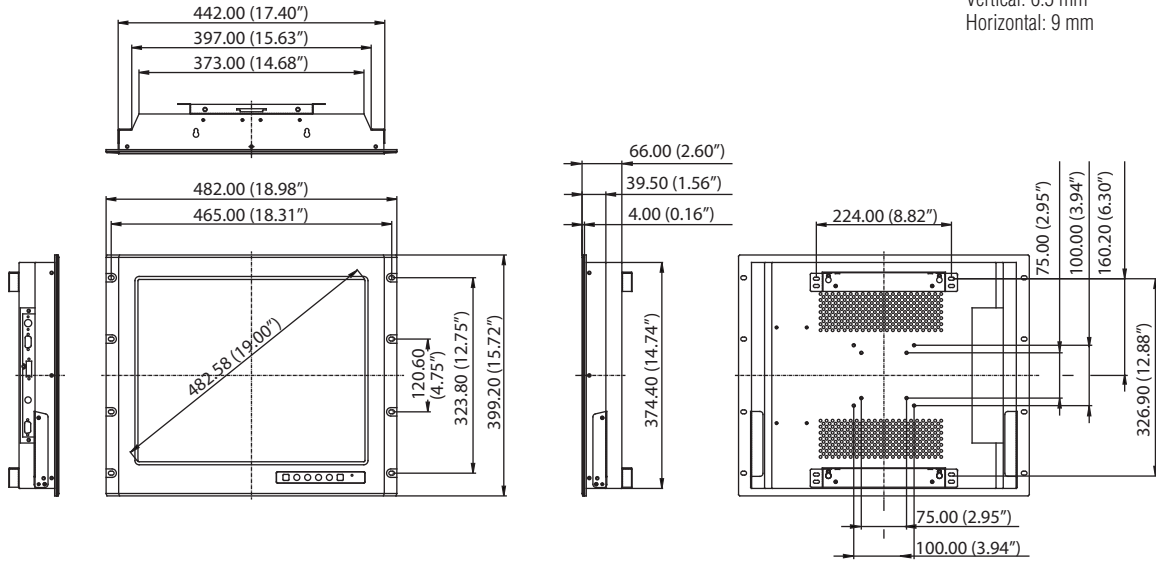
Ordering Information

- **FPM-3191G-XCE** 19" SXGA Ind. Monitor
- **FPM-3191G-RCE** 19" SXGA Ind Monitor w/Resistive TS (RS-232, USB)

Dimensions

Unit: mm

Diameters of the rackmount holes:
 Vertical: 6.5 mm
 Horizontal: 9 mm

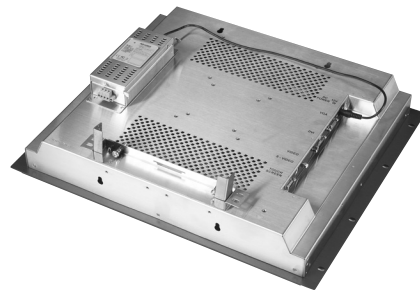


Panel Cut-out Dimensions: 444 x 376.4 mm (17.48" x 14.81")

Accessories

- PWR-246E Ind. DC to DC w/24-48 V_{DC} 1.4-2.9A In 12 V_{DC} 5A Out
- 1702002600 Power Cable US Plug 1.8 M
- 1702002605 Power Cable EU Plug 1.8 M
- 1702031801 Power Cable UK Plug 1.8 M
- 1702031836 Power Cable China/Australia Plug 1.8 M
- 1757002742 Adapter AC 90-264V 57W SPU63-105

Mounting with DC Source



Side View

